

EnergyTrendz WEEKLY

Week ending 24 July 2022

Issue 1315

A weekly review of New Zealand electricity markets compiled by Energy Link Ltd

Prices:

South Island	BEN			ISL		
	24-Jul-22	17-Jul-22	Change	24-Jul-22	17-Jul-22	Change
Average Prices	58.10	111.32	↓ -48%	63.11	121.44	↓ -48%
Ratio Day/Night	8.50	1.33	↑ 539%	8.58	1.35	↑ 536%
Ratio Week/Other Day	0.79	0.84	↘ -5%	0.80	0.84	↘ -5%

Key (Week Difference)

↑	>=	10%
↗	>=	5%
→	>=	0%
↘	<=	-5%
↓	<=	-10%

North Island	HAY			OTA		
	24-Jul-22	17-Jul-22	Change	24-Jul-22	17-Jul-22	Change
Average Prices	62.21	110.77	↓ -44%	68.35	114.41	↓ -40%
Ratio Day/Night	8.83	1.41	↑ 525%	8.88	1.51	↑ 488%
Ratio Week/Other Day	0.75	0.84	↓ -11%	0.80	0.90	↓ -12%

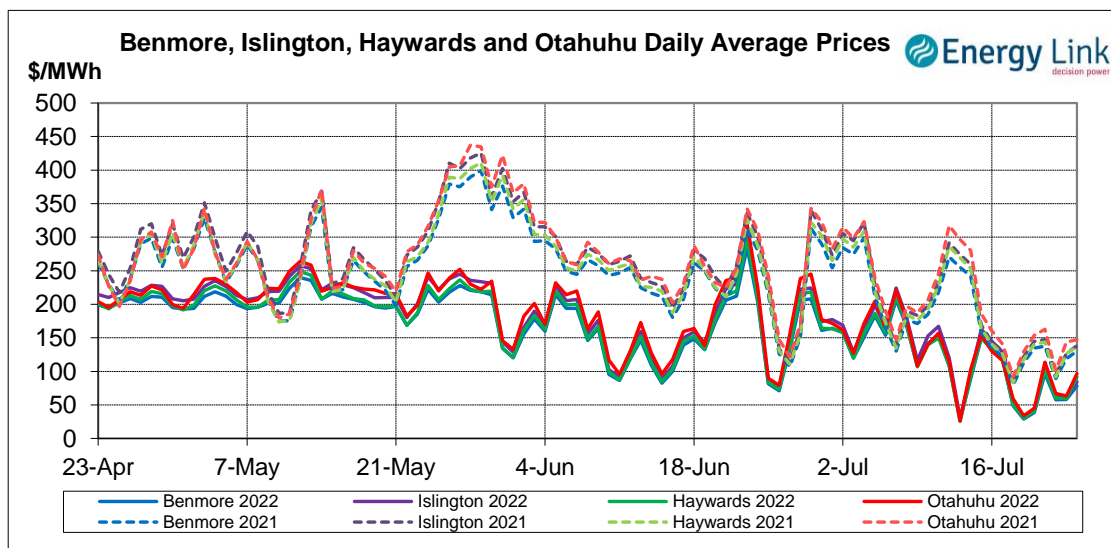
Price Differences	OTA-BEN			HAY-BEN		
	24-Jul-22	17-Jul-22	Change	24-Jul-22	17-Jul-22	Change
Average differences	10.25	3.09	↑ 231%	4.11	-0.55	↓ -852%

Provisional Prices still apply to: Sun, 24 Jul 22

Price Highlights:

	Price \$/MWh	Day	Location	Period
Maximum nodal price	\$1,879.42	Thursday, 21 July 2022	Maungaturoto	36
Minimum nodal price	\$0.01	Monday, 18 July 2022	Redclyffe	47
Maximum Ben_Hay differential	\$155.13	Sunday, 24 July 2022		26
Maximum NI reserve price	\$1,532.18	Thursday, 21 July 2022		36

Please note: Any Provisional Prices are not included in Price Highlights



Subscribe at www.energylink.co.nz/publications

Average Wholesale Spot Prices

Date	Benmore (\$/MWh)		Islington (\$/MWh)		Haywards (\$/MWh)		Otahuhu (\$/MWh)	
	Day	Night	Day	Night	Day	Night	Day	Night
24/07/2022	114.00	7.27	122.83	7.70	133.75	8.17	140.77	8.55
23/07/2022	82.61	9.06	89.18	9.62	84.93	9.21	89.92	9.68
22/07/2022	78.03	16.85	85.11	18.39	81.62	17.49	90.78	19.59
21/07/2022	142.16	5.78	156.05	6.30	150.26	6.03	166.63	6.97
20/07/2022	55.88	3.71	60.94	3.98	59.08	3.93	65.43	4.36
19/07/2022	41.99	2.22	45.86	2.37	44.12	2.31	49.45	2.68
18/07/2022	61.47	22.89	66.21	24.64	64.43	22.92	76.47	24.71

Note: Night: 00:00 – 08:00 and Day 08:00 – 24:00

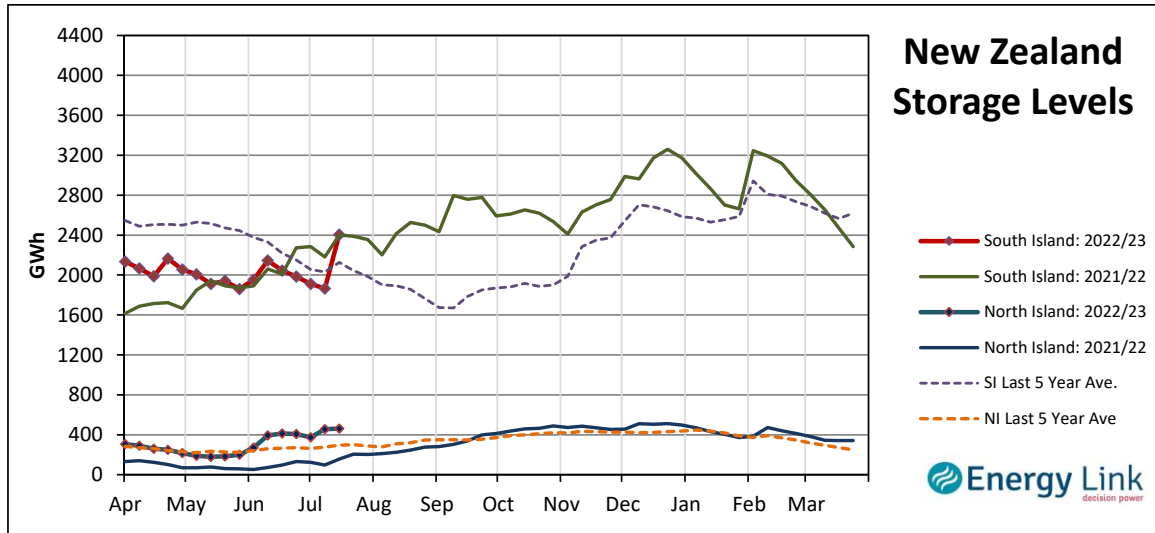
Indicator (\$/MWh)	Benmore	Movement	Islington	Movement	Haywards	Movement	Otahuhu	Movement
Average June 22 Price	154.11	-	165.74	-	158.63	-	174.22	-
Average July 22 Price	114.13	-	123.66	-	115.85	-	121.95	-
4 Week Moving Average Price	123.09	-19.3%	133.28	-19.2%	125.58	-19.2%	133.67	-19.6%
Weekly Average Price	58.10	-47.8%	63.11	-48.0%	62.21	-43.8%	68.35	-40.3%
Weekday Day Average Price	75.91	-37.3%	91.73	-34.4%	79.90	-35.2%	89.75	-31.9%
Weekday Night Average Price	10.29	-86.1%	33.12	-44.9%	10.53	-84.8%	11.66	-83.2%
Weekend Day Average Price	98.31	-19.3%	87.15	-39.2%	109.34	-9.9%	115.34	-5.2%
Weekend Night Average Price	8.17	-93.9%	14.00	-92.0%	8.69	-93.4%	9.12	-92.7%
Day - Night Differential	8.50	539.5%	8.58	536.1%	8.83	525.3%	8.88	487.7%
Weekday - Weekend Differential	0.79	-5.4%	0.80	-4.8%	0.75	-11.1%	0.80	-11.8%

Note: Movement represents difference from last week.

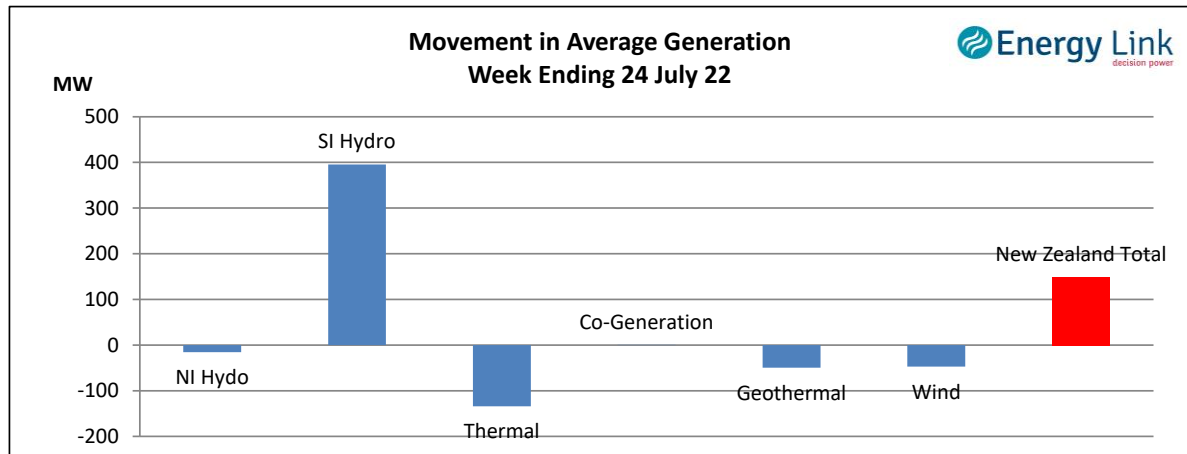
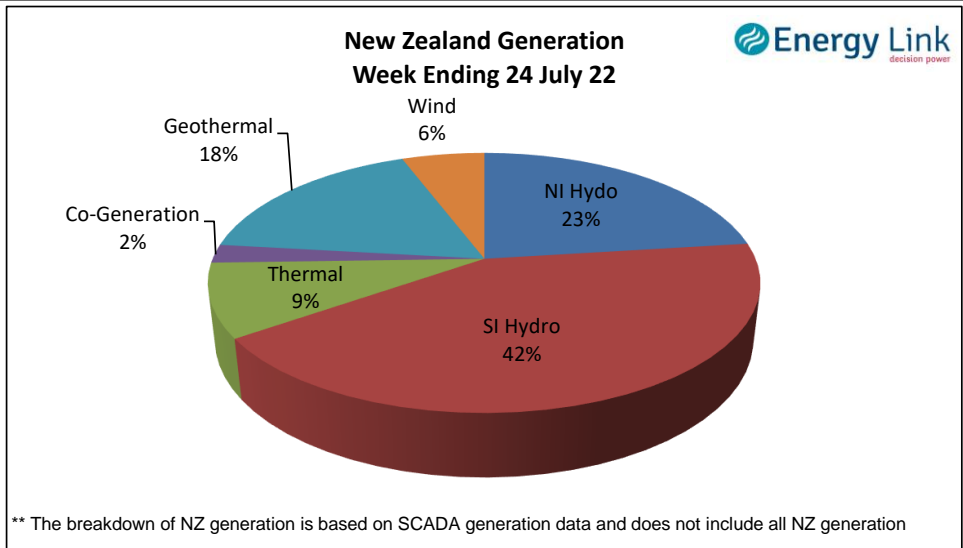
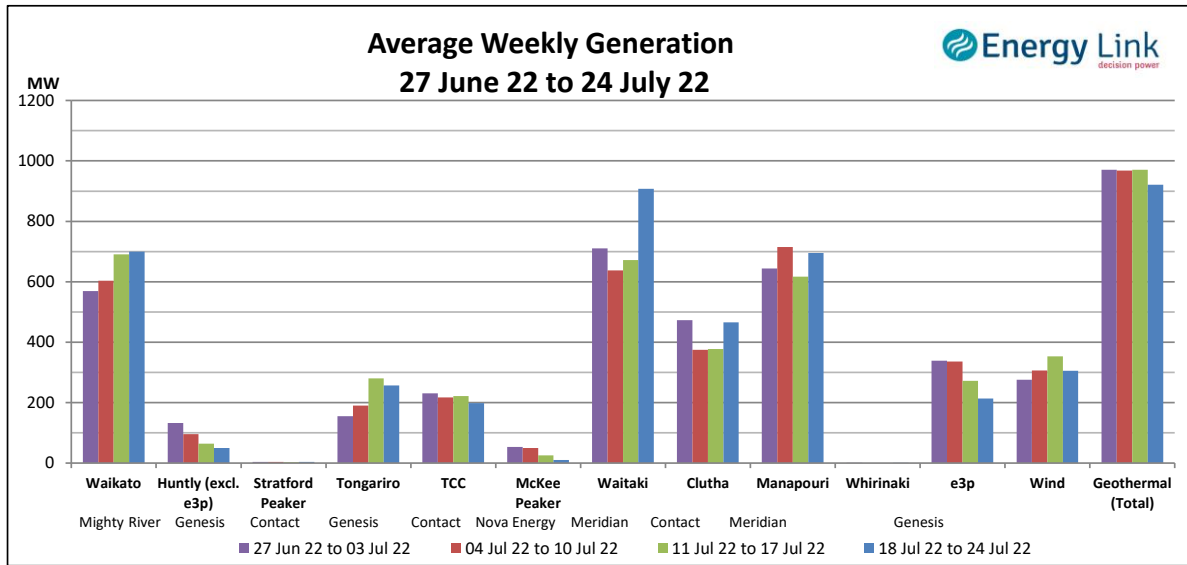
Storage: (as at last Thursday)

Total Storage increased to 2866 GWh.

NI storage increased by 1% to 461 GWh while SI storage increased by 29% to 2404 GWh.



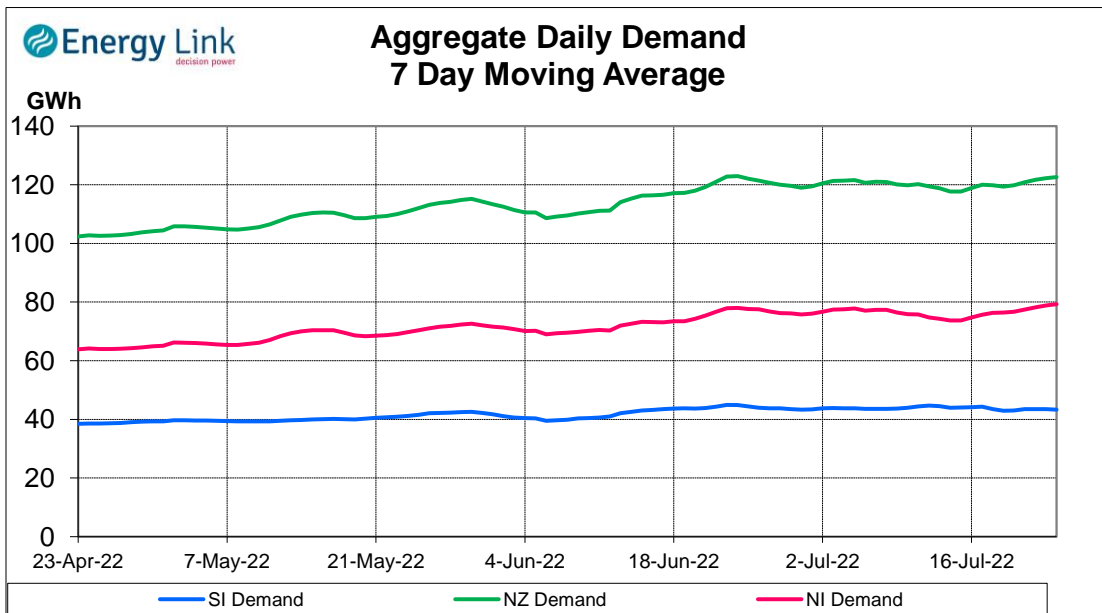
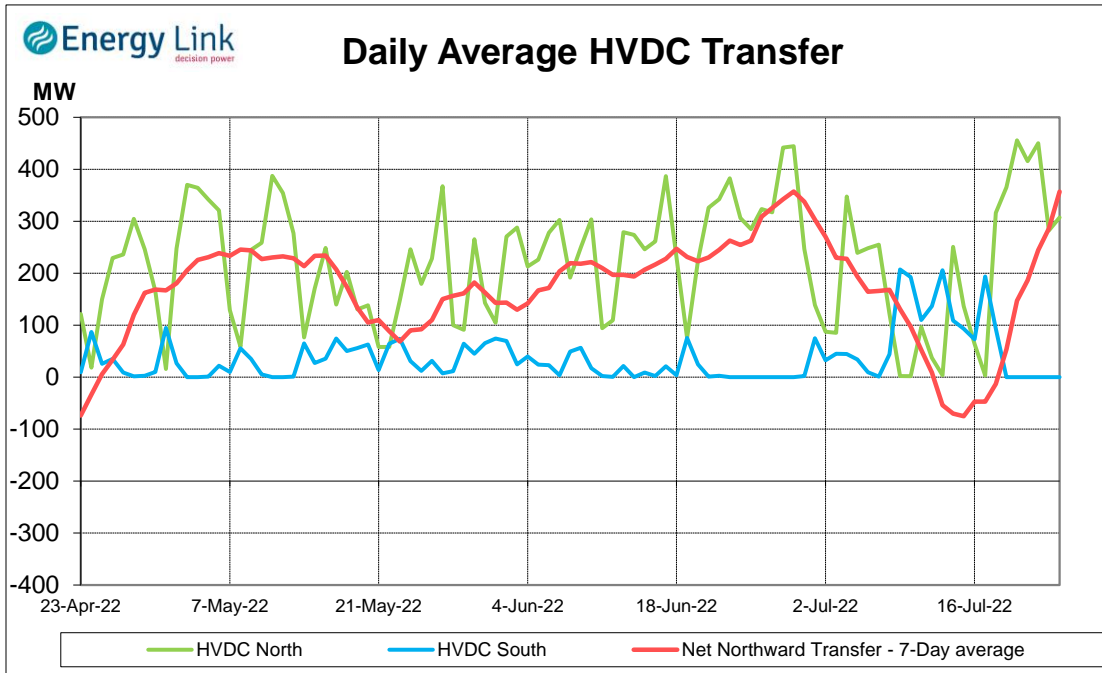
Generation:



Average Generation Market Share ¹

Contact	Mercury	Genesis	Meridian	Trustpower	Other
20% (20%)	25% (26%)	14% (17%)	33% (28%)	3% (4%)	4% (6%)

¹ Generation market share figures are based on SCADA data. The number in brackets represents the generation market share % from the previous week.

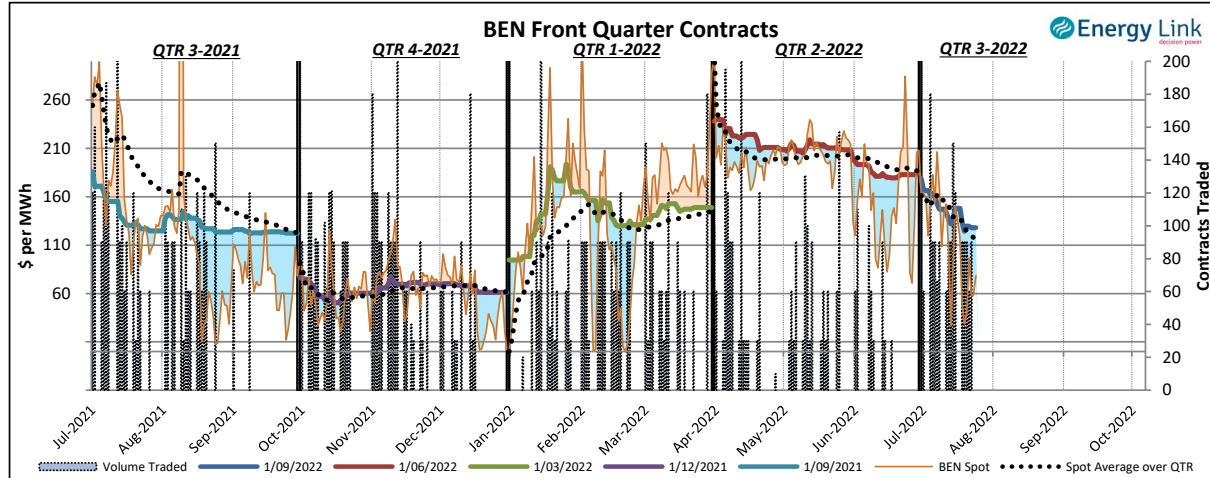
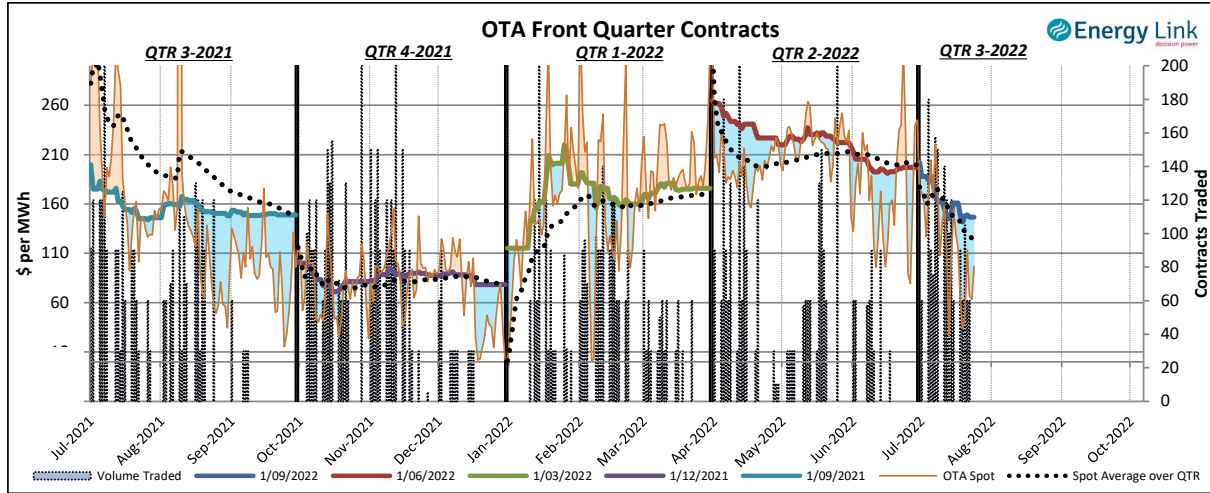


Demand data based on un-reconciled SCADA data.

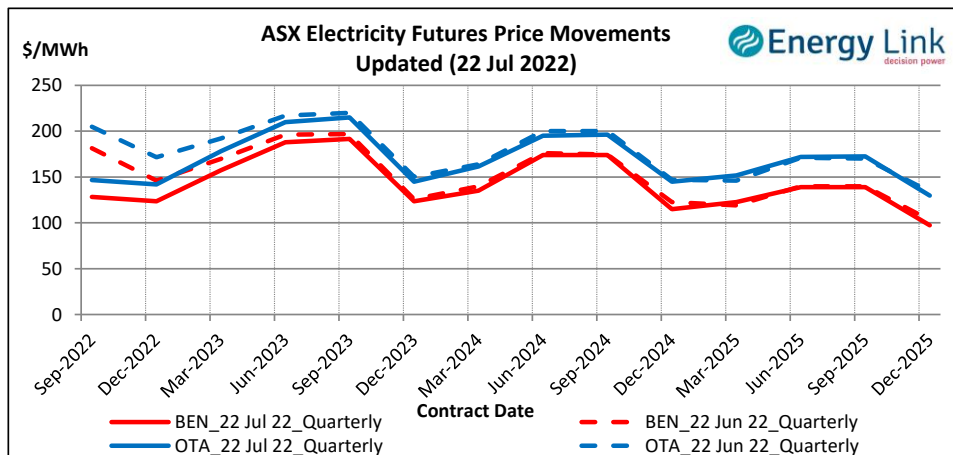
ASX Electricity Futures

The **Australian Securities Exchange (ASX)** listed Base Load Electricity Futures, Strip Futures and Calendar year Strip Options for two grid reference points (Otauhu and Benmore) in the New Zealand electricity market in July 2009. The ASX New Zealand Electricity Futures contracts are cash settled using the arithmetic average of half-hourly prices at the designated node over the period of a calendar quarter.

The two charts below display the price movements of the front quarter futures contract during the current quarter and for the four quarters prior to the current quarter. Also shown is the volume of contracts traded, the relevant spot price and the spot average price over the quarter during the time when each contract was the front quarter contract.



The chart to the right shows the most recent transactions for all currently traded futures contracts at both the BEN & OTA nodes. For comparison these prices are mapped against the prices for the same contracts four weeks prior to the current Market Review.



Carbon Dioxide Emissions

The chart below shows the estimated Carbon Dioxide (CO₂) emissions for New Zealand's major thermal power stations. The estimates are based on weekly generation output and assumptions on each plant's thermal efficiency.

Note: Since 22 Feb 2016, Geothermal plant is now also included in the total carbon emissions.

